

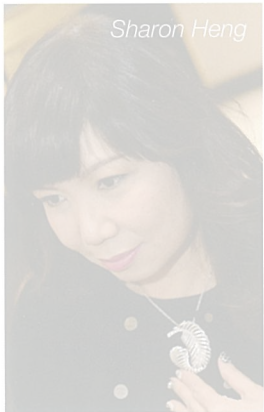
Diana Widjaja and Grace Kong



Sylvia Loi and Sharel Ho



Sharon Heng



Chia Nglang Hong and Fred Ho



Grace Wong



Shine Bright DEFRED'S NEW SHOWROOM OPENING

As the iconic Marilyn Monroe song goes, “Diamonds are a girl’s best friend”—DeFred Jewellers’ new showroom at Palais Renaissance displayed an abundance of bling and sparkles for guests to feast their eyes on at its opening in January. So enamoured was Sharon Heng with the jewellery pieces that she bought a diamond-encrusted leaf-shaped pendant and wore it on the spot. It was also managing director Sharel Ho’s birthday and her close friends brought pots of beautiful orchids and gifts to mark the joyous occasion.

Art Attack ROLLS-ROYCE'S NEW ART COMMISSION

Rolls-Royce Motor Cars Singapore celebrated the unveiling of a new art installation at its Leng Kee Road showroom in January with an intimate dinner. The neon sculptural work *Untitled (Opulence)* by Chicago-based artist Carlos Rolón honours the brand’s signature car design elements including its Spirit of Ecstasy ornament. Guests of Pearl Lam Galleries (where a series of Rolón’s other artworks were exhibited) met with the artist himself, and also got to appreciate the latest Rolls-Royce Ghost Series II and Wraith models up-close.



Carlos Rolón



Thomas Hartono and Jocelyn Tjioe



Patrick Riveron



Alexandra and Jasmine Prasetio



Marisa Wee



Lisa and Louie Bate